



iInventory is downloadable software that lets you quickly audit Windows, Mac and Linux computers for their hardware and software configurations. If you are a new user, get off to a good start with this convenient guide. All the steps and information are from the full product Help section, but this abbreviated version should whiz you through your first audit!

v7 quick start tutorial

How it works	<ol style="list-style-type: none"> 1. Install the iInventory console just once on a Windows PC. 2. Either remotely audit networked Windows PCs on demand or create and run small portable inventory agents on target computers to audit them via disk, email, LAN, WAN, login script, internet or intranet. 3. Use the iInventory console tools to report on, manage and share your audit data. <hr/>
Database formats	<p>iInventory offers a choice of database formats:</p> <p>MS Access – Built in to the console MSDE – requires a free download from www.iinventory.com MS SQL Server – requires possession of a fully licensed installation</p> <hr/> <p>Note: Some iInventory administrator features occasionally require an internet connection. Features may be limited if there is no connection available.</p> <hr/>
Compatibility	<p>iInventory can audit servers and workstations with these operating systems:</p> <ul style="list-style-type: none"> • Windows 95, 98, NT, 2000, Me, XP, Vista • Apple Mac OS 8.1 up, OS 9, OS X • RedHat, SuSe, Mandriva, Mandrake, CentOS, Ubuntu & Gentoo <hr/>
System requirements	<p>iInventory comprises a Windows 32-bit management console plus inventory agents for popular network and client operating systems.</p> <p>The iInventory console can be installed on a Windows 2000, Server 2003, XP or Vista PC with at least 100mb of free space. We recommend that you install the console onto a workstation rather than a server for three main reasons:</p> <ul style="list-style-type: none"> • It is often more secure, and always available • Data throughput is more efficient for large databases • Network users (targets) have no need to access any portion of the main program or data <p>You need only install the console to the network if others need supervisory access to iInventory. Multiple installations of the console are permitted by the license.</p> <p>Note: If using MSDE as the database format a computer with a minimum of 2GHz processor and 512MB of RAM is recommended.</p> <hr/>
Install	<p>Close all other applications and run the download iInventory_v7.exe file to install iInventory. To support the Microsoft components installed during this process a reboot may be required.</p> <hr/>
Start iInventory	<p>To start the console click the Start button. Select Programs > iInventory v7 > iInventory v7 or double click the new iInventory v7 icon on the desktop.</p> <p>This opens the console, where you can:</p> <ul style="list-style-type: none"> • scan and audit your network • run a self audit on your own PC

Console

- create inventory agents
- import inventory data

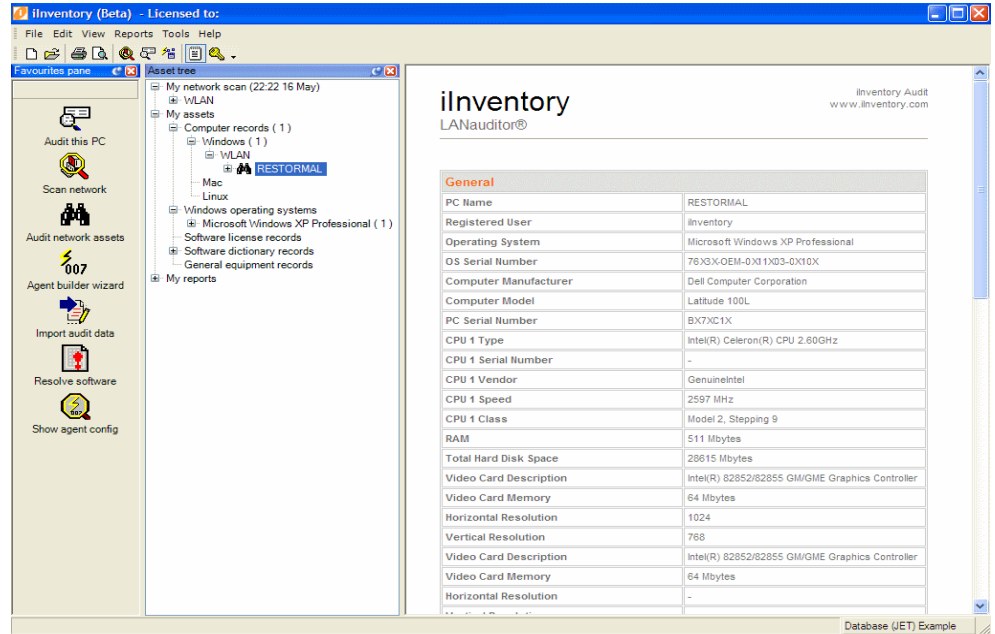
The iInventory console comprises the following elements:

Menus & Tool bar – provides access to available menus and options

Favorites pane – provides icons to access the main functions

Asset tree pane – allows easy viewing of record details

Report pane (right pane of the console) – when you run a query, results are displayed in this grid



Self audit and network scan

iInventory has a self audit / network scan feature for new users. It is displayed when the console is started for the first time, or by using the **Tools > Audit** menu. Run this now to quickly see the information that iInventory can collect.

This feature runs a one-click audit of the PC on which iInventory is installed and scans your network. Results are displayed in the Asset tree under My network scan & Computer records.

After the audit you can examine the collected audit information as follows:

Drill down through the tree to your computer record. Select any section to display a report. Run certain standard queries using **Reports > Standard >....** (Easy Self Audit runs a software registry check. The **Report > Standard > Win32 Software** queries will be available once a full software file matching audit is carried out.

Note: Self Audits and network scans do not leave an asset tag file on your PC. When it is later audited using a full agent the asset tag file will be created.

Remote auditing

To remotely audit the computers detected by the network scan click on the Audit network assets icon in the Favorites pane or go **Tools > Audit > Audit network assets**.

On the Audit network assets screen, select the computers to audit in the left pane and click Add.

Under User name / password(s) to use: click Add then enter the user name / passwords necessary to audit the remote computers. The account used will need to have administrator permissions on the remote computers.

Click **Start** to audit the computers.

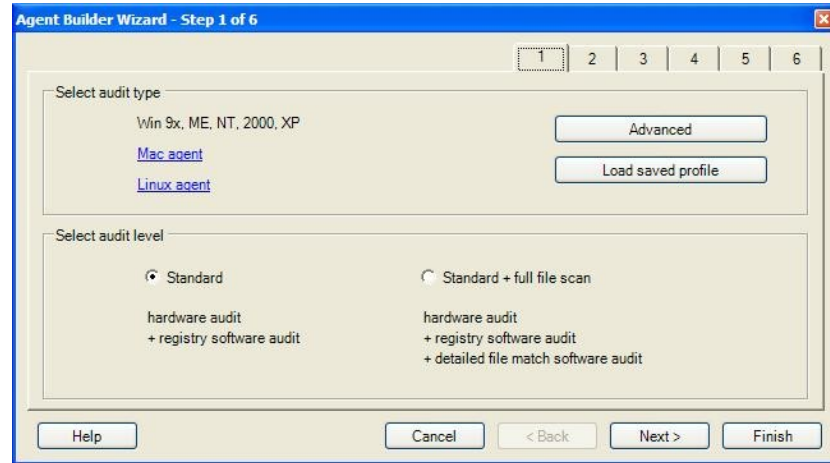
Once the audit is complete the audit results will automatically be inserted into the Asset tree.

Audit your PC more thoroughly

This section describes building a Windows inventory agent and running it on your PC, and then importing the resulting audit data into the console for review. Once you understand this simple process you can run inventory in any size of enterprise.

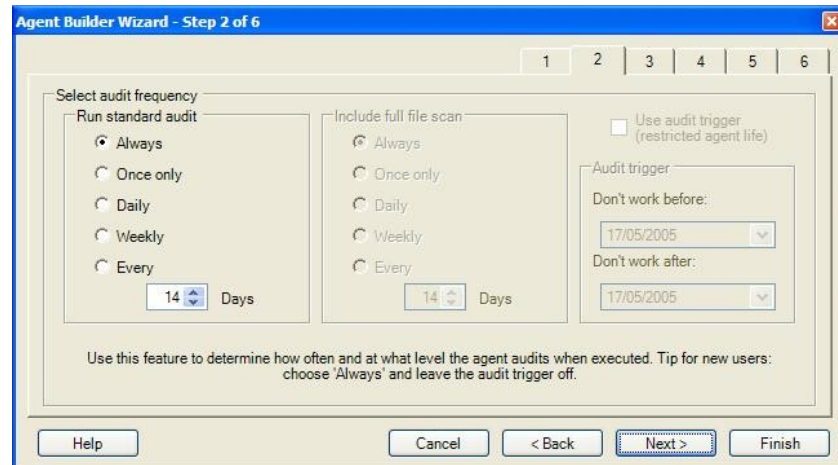
Step 1.

In the iInventory console choose **Tools > Agent Builder Wizard**. In Step 1 Windows Audit Type and **Standard** audit level are already selected by default so just click **Next >**.



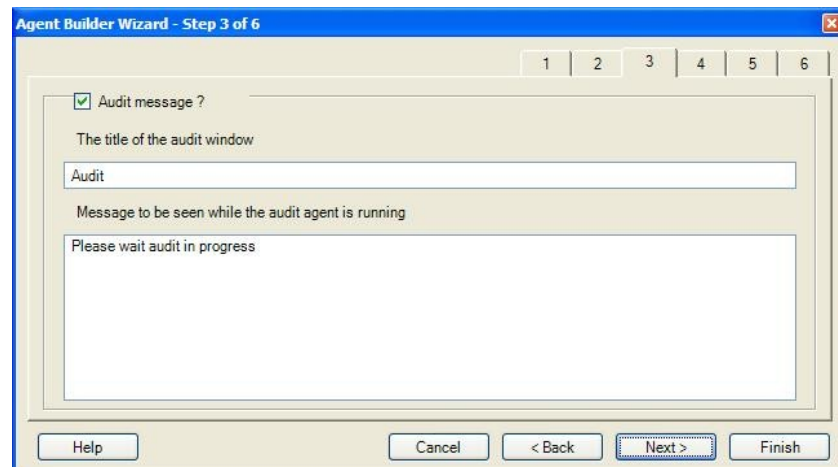
Step 2.

No changes required here – so just click **Next >**.



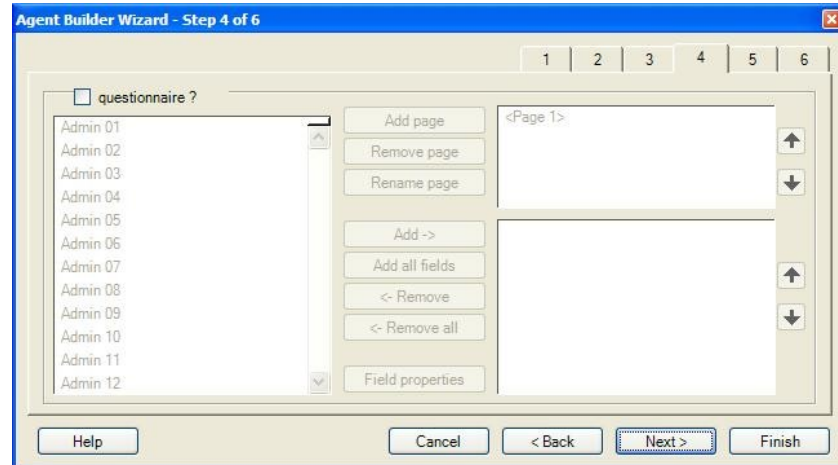
Step 3.

Enter a sample title and message and click **Next >**.

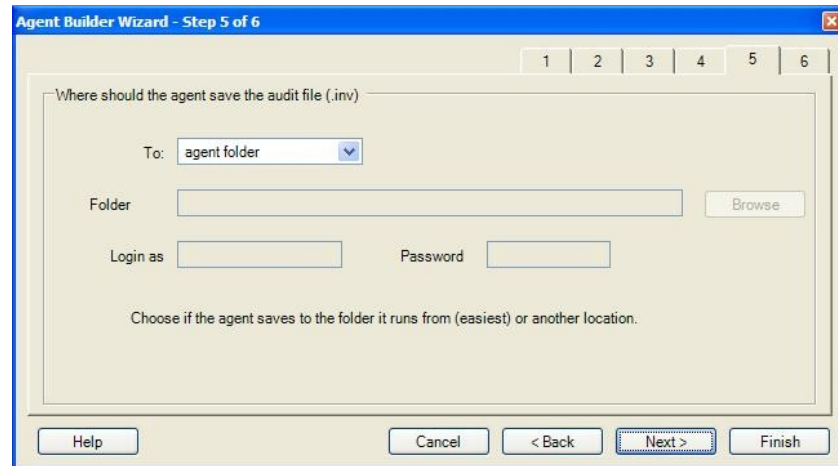


Step 4.

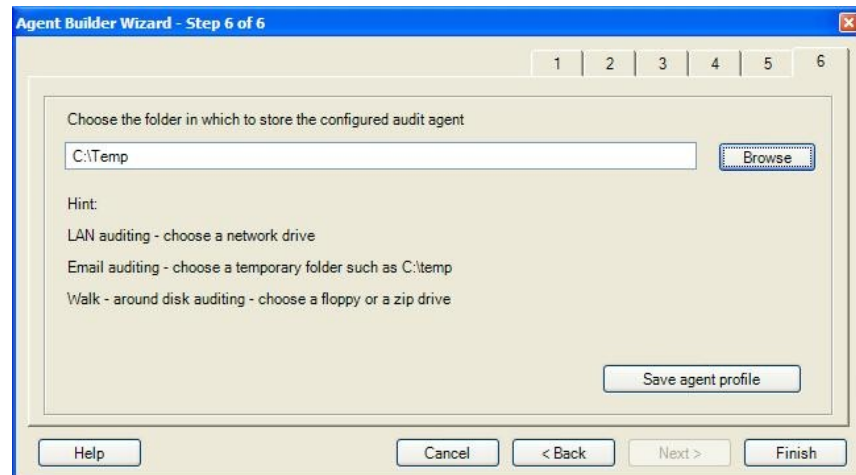
No questionnaire is required this time so just click **Next >**.

**Step 5.**

The simplest default setting is fine so just click **Next >**.

**Step 6.**

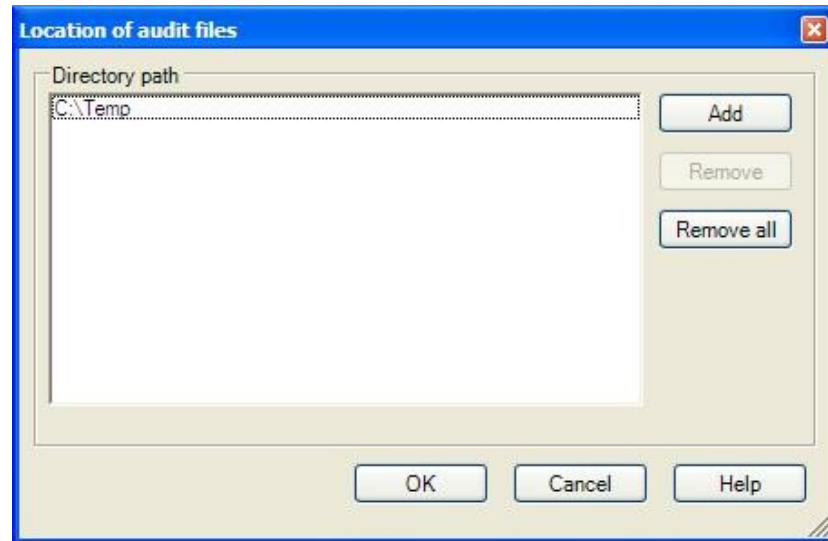
Type or browse to select any folder on your PC to run the agent from – such as C:\Temp. Click **Finish >**. You should see 'Agent created successfully' message.



This final step imports the audit data generated by the Agent into the Example database.

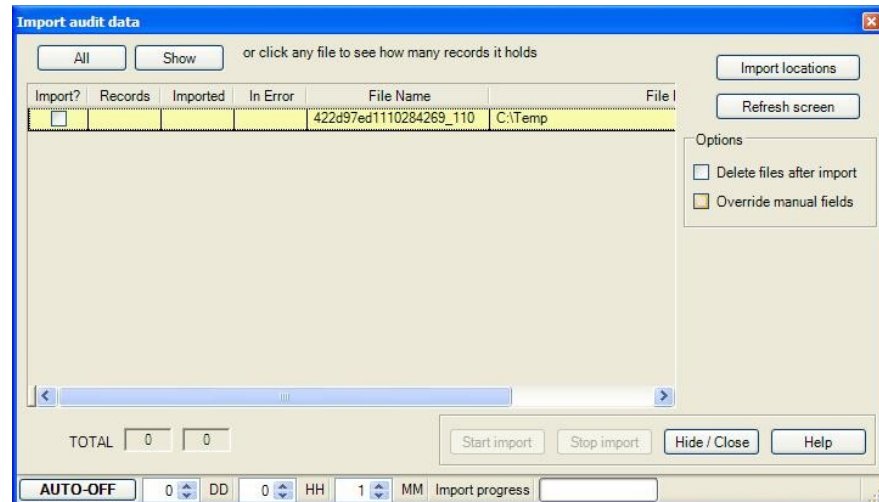
Step 7.

In iInventory choose **Tools > Import audit data > Import Locations**. Type or browse to select the location of the inventory results file (*.inv). This is in the same location as the agent. Then click Add and OK.



Step 8.

The Import audit data main window should now show your inventory data file ready to import, **Click** on the check box next to the file name to select it.



Note:

If you run the Inventory Agent twice on the same machine, the file will show two records. When it is imported to the database iInventory recognizes that both belong to the same PC and overwrites the older record with the new one.

Step 9.

Select **Start import** to import the audit data into your database. When completed click **Hide/Close**. The new record will appear in the Asset tree.

Step 10.

To view the audit data for your machine you may:

- run a suitable standard report (Reports > Standard > ... or My reports in the Asset tree)
- click on and expand the record in the Asset tree
- write your own query using Reports > Easy builder

Your local PC audit is completed

What to do next

You now know how to:

- self audit your PC
- remotely audit computers
- make an audit agent
- run it on a target computer
- import the audit data
- review the audit data

This process is all that you need to understand in order to inventory any number of computers. The only variable is how you want the target computers to activate the agent.

There are many ways in which to do this, and the most common are detailed in the Help chapter, *Auditing Methods*. You are not limited to these - any method that allows your target to run the agent will work equally well. The agent can be moved at any time and will run from any location.

Remember

Use the correct inventory agent for the platform set - Windows, Mac & Linux. A Linux agent will not audit a Windows computer.

We hope that this Quick Start tutorial has been helpful. For more detailed information on the powerful features that iInventory offers please see its Help. For assistance contact us at any time.

iInventory Ltd
2 Lansdowne Crescent, #240
Bournemouth BH1 1SA
United Kingdom

International +44 870 607 0073
Fax +44 870 607 0074

iInventory Ltd
1971 Western Avenue, #1129
Albany NY 12203
USA

Toll free 1-866 482 8348
Fax (212) 214 0317

